



We Supply Doors | Hardware and Bath Accessories for Owners and General Contractors across 48 States of USA.

BATHROOM ACCESSORIES BUYER GUIDE FOR CONTRACTORS AND PROJECT PLANNERS



Choosing bathroom accessories might look like a simple task but do you know that they can make a world of difference in your construction or renovation project?

It's true.

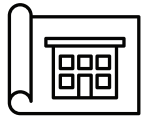
The right accessories ensure the bathroom functions flawlessly enhance the aesthetics and create a space that meets (and exceeds) your client's expectations.

This comprehensive guide equips contractors and project planners with the knowledge to select durable, cost-effective, and visually appealing bathroom accessories, ensuring a successful project from start to finish.

Understanding Client Needs and Project Requirements

Understanding your client's vision and project details is key to choosing the perfect bathroom accessories.

Assessing the Scope



- **Project Type:** Identifying what type of project (residential, commercial, or institutional) is the first step. Residential projects prioritize comfort and personal style, while commercial projects require a focus on durability, hygiene, and ADA compliance. Institutional settings like hospitals or senior living facilities have even stricter requirements, necessitating grab bars, emergency call buttons, and specialized shower seating. For high-traffic areas, automatic doors provide a hands-free experience and improve accessibility.

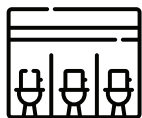


- **Budget Constraints:** Discussing budget limitations with your client upfront is essential. Luxury finishes might not be feasible for a budget-conscious renovation, while high-traffic commercial restrooms benefit from investing in long-lasting materials.



- **Aesthetic Goals:** Collaborate with your client to understand their desired aesthetic. Are they drawn to a sleek, modern look? Do they prefer a classic or traditional style? Knowing the overall design theme ensures you choose accessories that complement the existing fixtures and finishes.

Identifying Functional Requirements



- **Usage Frequency:** The frequency of use significantly impacts the type of accessories needed. High-traffic public restrooms require sturdier towel bars and hooks compared to a private master bathroom. Opting for sensor-activated faucets and soap dispensers in these high-use areas can also promote hygiene and reduce waste.



- **Accessibility Needs:** The Americans with Disabilities Act (ADA) outlines specific guidelines for accessible bathrooms. Grab bars near toilets and in showers, along with wider doorways and lowered towel bars, are essential for public and institutional settings. Understanding these requirements ensures your project meets accessibility standards.



- **Maintenance and Cleaning:** Easy-to-clean materials like stainless steel or smooth plastic minimize maintenance costs in the long run. Consider accessories with concealed mounting for a sleeker look and easier cleaning behind them.

Selecting the Right Materials

Durability, quality, and sometimes sustainability are key considerations when choosing materials. Here's a breakdown of popular options:

Durability and Quality



- **Stainless Steel:** The champion of high-humidity environments, stainless steel is resistant to rust and corrosion, making it ideal for showers, towel bars, and hooks. However, it can show water spots and fingerprints more readily.



- **Brass:** A timeless choice, brass offers durability and a classic look. However, it requires regular cleaning to prevent tarnishing.



- **Plastic Composites:** A cost-effective option, plastic composites come in a wide variety of designs. While lighter and less durable than metal options, they are a good choice for budget-conscious projects in low-traffic areas.

Sustainability Considerations



- **Eco-friendly Materials:** Bamboo, recycled plastics, and biodegradable composites are becoming increasingly popular choices for environmentally conscious clients. These materials offer a stylish and sustainable alternative to traditional options.



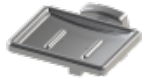
- **Water Efficiency:** Implementing low-flow faucets and showerheads can significantly reduce water usage without compromising functionality.

Top Bathroom Accessories for Commercial Projects

Essential Accessories



- **Towel Bars and Hooks:** Sturdiness is key in commercial settings. Opt for double towel bars in high-traffic areas and choose hooks with a weight capacity suitable for wet towels. Consider installing coat hooks near the entrance for added convenience.



- **Soap Dispensers:** Automated, touchless soap dispensers promote hygiene and reduce waste compared to traditional bar soap. Choose dispensers with a large refill capacity to minimize maintenance.



- **Toilet Paper Holders:** Consider multi-roll holders in high-traffic restrooms to prevent frequent restocking. Recessed holders create a cleaner look and minimize the risk of accidental damage.

Specialty Accessories



- **Grab Bars:** Essential for safety in showers and near toilets, grab bars are essential for accessibility in public and institutional settings. Choose ADA-compliant grab bars that are securely mounted for optimal support.



- **Sanitary Napkin Disposals:** A must-have for women's restrooms in all commercial settings, sanitary napkin disposal units promote hygiene and proper waste disposal.

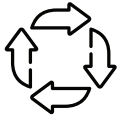


- **Baby Changing Stations:** Family-friendly businesses and public spaces benefit from installing baby changing stations. Choose a sturdy, easy-to-clean model with a safety strap and a designated diaper disposal bin.

Design and Aesthetic Harmony

A cohesive bathroom design elevates the overall look and feel of the space. Here's how to ensure your chosen accessories match the existing fixtures and finishes:

Coordinating with Existing Fixtures



- **Style Match:** Maintain a consistent style throughout the bathroom. Modern faucets pair well with sleek, minimalist towel bars and hooks, while traditional clawfoot tubs complement classic towel racks and ornate soap dishes.



- **Finish Consistency:** A uniform finish throughout the bathroom creates a visually pleasing space. Opt for all accessories in the same finish (e.g., matte black, chrome, brushed nickel) to achieve a polished look.

Customization Options



- **Brand Customization:** Some bath accessories suppliers offer customization services, allowing you to incorporate your client's brand logo or specific colors onto towel bars, soap dispensers, or even wastebaskets. This is a great option for hotels or commercial spaces that want to maintain brand consistency.



- **Unique Designs:** For high-end projects, consider incorporating custom-designed fixtures or bath accessories. This can be a statement piece that elevates the bathroom design and sets it apart from the ordinary.

Budget Management and Cost-Saving Tips

While high-quality materials are ideal, staying within budget is equally important. Here are some tips to help you save money without compromising on functionality or aesthetics:



- **Bulk Purchasing:** Negotiate with suppliers for bulk discounts when working on multiple projects or large commercial spaces.

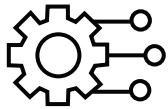


- **Plan Ahead:** Ensure timely ordering of materials to avoid last-minute purchases, which can be more expensive.

- **Value Engineering**



- **Alternative Materials:** Explore alternative materials that offer a similar aesthetic but come at a lower price point. For example, consider brushed nickel instead of chrome for a similar look at a potentially lower cost.



- **Multi-Function Accessories:** Opt for multi-function accessories that combine several features. For example, a combination towel bar and toilet paper holder reduces the overall number of items needed, saving on material and installation costs.

Supplier Selection and Relationship Management

Partnering with reliable suppliers is key to a successful project. Here's what to look for:

Choosing a Reputable Bathroom Accessories Supplier



- **Quality Assurance:** Work with bath accessories suppliers known for their high-quality products. Look for certifications and positive customer reviews to ensure you're getting reliable products.



- **Warranty and Support:** Prioritize bathroom accessories suppliers that offer robust warranties on their products and responsive customer support in case of any issues.

Long-Term Partnerships:

Building strong relationships with reliable bath accessories distributors can benefit your business in the long run:

Choosing a Reputable Bathroom Accessories Supplier



- **Reliability:** Partner with bathroom accessories suppliers known for on-time deliveries and clear communication to avoid project delays.
- **Support Services:** Prefer distributors who offer additional services such as design consultation or logistical support. This can save you time and ensure a smooth project flow.

AORBIS—Bathroom Accessories Distributor

Here's where AORBIS can be your partner.

Being a dependable bathroom accessories distributor, through our extensive selection of high-quality bathroom accessories and our understanding of value engineering principles, we can help you find the perfect balance between functionality, aesthetics, and budget. We offer a wide range of finishes and materials to suit your project's needs, ensuring you get the best possible value without compromising on durability or design.

Make a Perfect Choice

Choosing the right bathroom accessories goes beyond aesthetics. It's about selecting durable, functional items that meet the specific needs of the project while staying within budget. This guide equips contractors and project planners with the knowledge to make informed decisions regarding materials, design, and suppliers. By considering all these factors, you can ensure the chosen bathroom accessories contribute to a successful project that not only functions flawlessly but also exceeds your client's expectations.

FAQs

1. Where can I find a reliable distributor for bulk bathroom supplies in 2024?

Finding a reliable distributor for bulk bathroom supplies is key to completing your projects efficiently and affordably. Look for a dependable bathroom accessories distributor like AORBIS with a large selection of high-quality products from trusted manufacturers. They should also offer competitive pricing on bulk orders.

2. Are there any benefits to buying wholesale bath accessories for my contracting business?

Absolutely! Buying wholesale bath accessories from a reputable bath accessories supplier offers several benefits:

- **Cost savings:** Bulk discounts can significantly reduce your project costs, allowing you to offer competitive pricing to your clients while maintaining healthy profit margins.
- **Variety and selection:** Wholesale bath accessories distributors typically carry a wide range of products from various brands and styles. This allows you to find the perfect accessories for any project, regardless of design theme or budget.
- **Streamlined ordering:** Partnering with a single, reliable distributor simplifies the ordering process, saving you time and effort.

3. How can I stay up-to-date on the latest trends in bathroom accessories?

Bath accessories distributors like AORBIS can be a valuable resource for staying informed about the latest trends in bathroom design. They often have access to industry insights and information about new product launches. Additionally, you can subscribe to industry publications and attend trade shows to keep your finger on the pulse of the latest trends.

Discover the difference with AORBIS, your dependable bath accessories supplier, offering a curated selection of premium products to elevate every project."

About AORBIS Inc.

Welcome to AORBIS Inc., your trusted supplier of doors, hardware, and bath accessories across 48 states of the USA. Our expansive network, featuring over 100 manufacturers, allows us to offer a broad selection of products tailored to your requirements.

Aorbis provide to the needs of new construction and renovation projects alike. We prioritize timely and accurate deliveries, focusing on Value Engineered (VE) solutions to enhance cost-efficiency without sacrificing quality. Our commitment to excellence includes providing thorough and precise quantity takeoffs for Division 8 and Division 10 of the CSI Master Format. This ensures your projects are executed on time and within budget.

Experience the AORBIS difference to elevate your next project with us.



W: www.aorbis.com | E: info@aorbis.com | P: (860) 317-7100

Copyright © 2024 AORBIS Inc. All rights reserved.